

# POS-455

POS System

**Essae**<sup>®</sup>  
...for Excellence



Bezel Free PCAP Touch



FANLESS

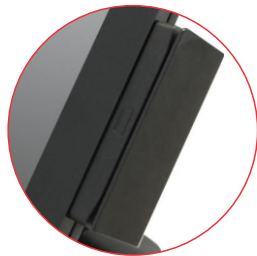


Presenting a truly Elegant, Stylish & Super Slim POS System

## Technical Specification

Model	POS-455B	POS-455C
CPU	Intel Baytrail J1900 QUAD CORE processor	Intel Core i3-6100U Processor
<b>Operator Display</b>		
Size	15-inch TFT LCD	
Maximum Resolution	1024 x 768	
Touch Screen	Projected Capacitive Touch (PCAP) – True FLAT / Bezel Free	
<b>Memory</b>		
Storage Memory	500 GB HDD	
System Memory	4 GB RAM	
<b>External Interface ports</b>		
USB	5	6
Serial (DB9)	3	
Network	1 x Gigabit LAN	
Cash Drawer	1 x RJ 11	
Display Port	1 x DB15	
Audio	1 x Line-In, 1 x Line-out	
<b>Environmental</b>		
Operating Temperature	0°C ~35°C	
Storage Temperature	-20°C ~ 60°C	
Power Adapter	120W/19V/6.32A	
<b>Optional Accessories</b>		
MSR	3 Track, USB interface	
Customer Display	LCM Display 2 x 20 characters, USB interface	
<b>Operating System</b>		
Operating System supported (Both 32-bit & 64-bit versions)	Windows 10 IoT Enterprise Entry, Windows 10 Windows 7, Windows POSReady 7 Linux (Subject to Confirmation)	Windows 10 IoT Enterprise Value, Windows 10 Windows 7 Pro, Windows POSReady 7 Linux (Subject to Confirmation)

### Accessories



MSR



Customer Display

## Essae-Teraoka Pvt. Ltd.

410, 100ft Road, 4th Block,  
Koramangala, Bengaluru-560 034  
info@essae.com  
<http://www.essae.com>

+91 80 3021 3021  
1-800-425-3111  
0-78488 12346

**Essae**®  
...for Excellence

Your Essae representative

Note: The above model meets the statutory and regulatory requirements as per the provision of legal metrology Act 2009 and legal metrology (General) Rule, 2011. Specifications are subject to change without notice. Other names and logos used are property of respective brands.